



TAIWAN  
EXCELLENCE  
2024

The Most  
Comfortable

AIR

Ama Fans

**The Most  
Comfortable Air** 





# The Perfect Combination of Smart Technology and Nature

Cooler the apparent temperature x The Secret of natural air

During the summer, doing outdoors activities or climbing mountains, all the summer heat often swept away by the gentle breeze.

The team of AMA TECH has carried out in-depth studies and found that the most comfortable wave frequency for humans to accept is natural wind.

When the strong breeze blows, the moisture on the skin surface can be evaporated; gentle breeze can provide the buffer time for skin sweating, when natural wind with such a change of wind speed blows, the human body can cool down naturally.

The helicopter large fan adopts the technology of intelligent AIOT and HVLS of large air volume and low speed, which reproduces natural wind that can blow the human body in an all-round and three-dimensional way, and create the most comfortable wind.





## Drive Controller DC

- Integrated intelligent control substrate
- High frequency noise suppression algorithm
- Ambient temperature sensing
- Multi-module control
- Fully sealed aluminum alloy cooling body

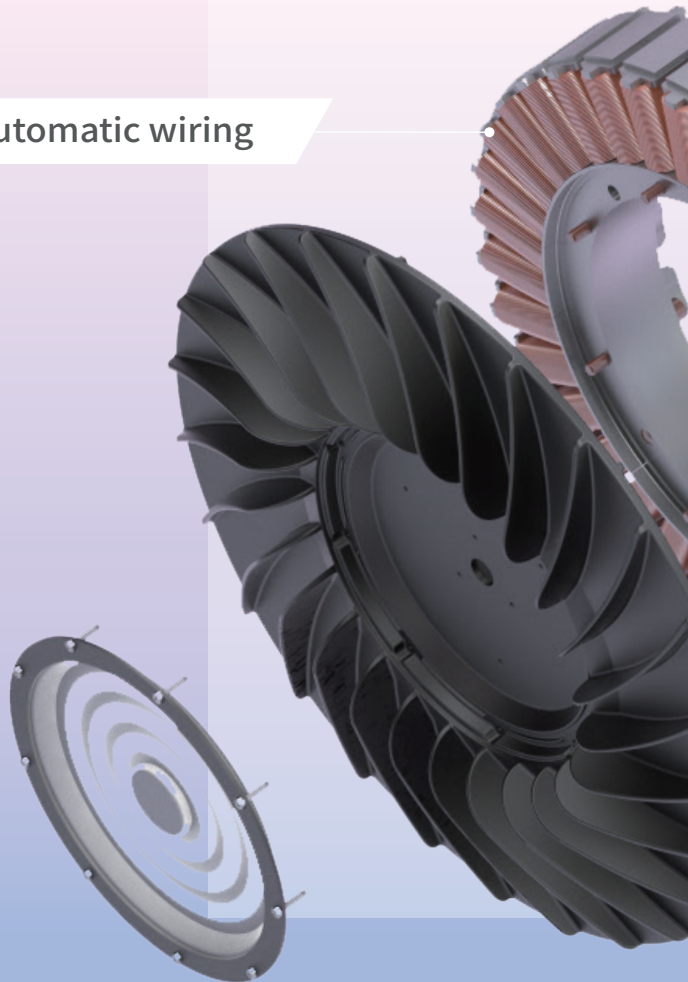


Labor-saving and safe wire connector

Sensorless control technology

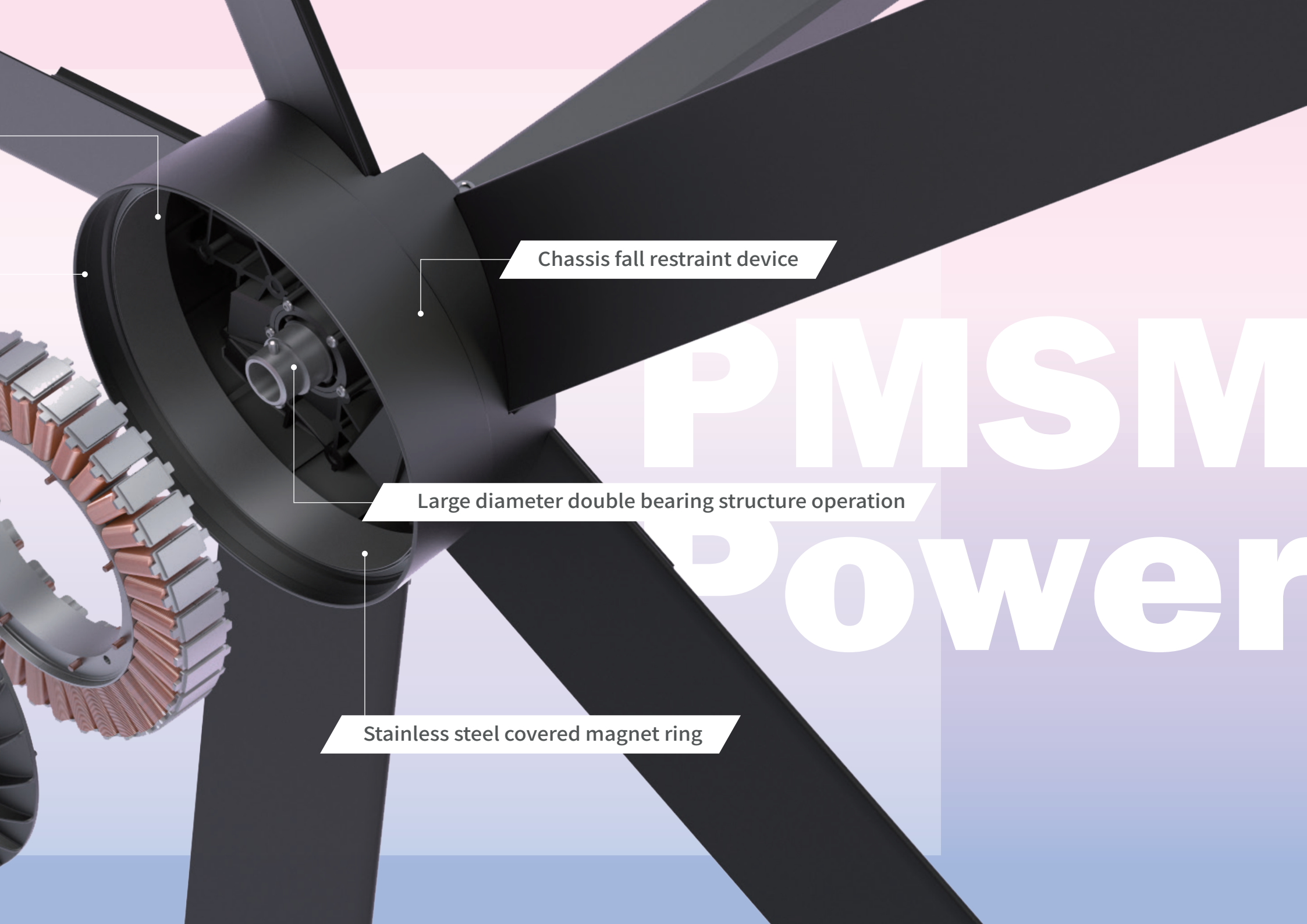
Unibody Aluminum Alloy Chassis

Vacuum pure copper automatic wiring



# Core Technology & Waterproof and Antifouling & Patent Protection





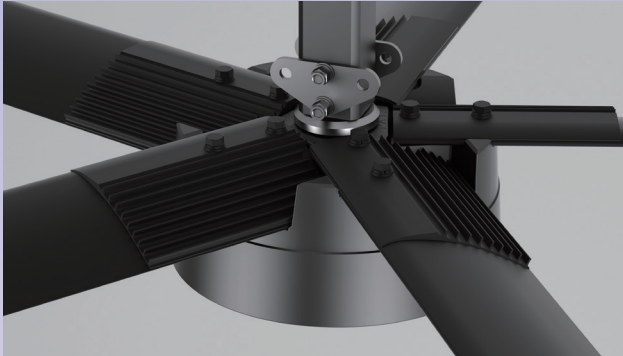
Chassis fall restraint device

Large diameter double bearing structure operation

Stainless steel covered magnet ring

# PMSM Power

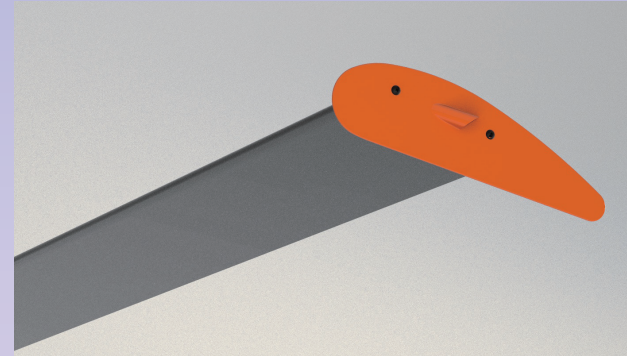
# Wind Field Circulation



Patented embedded blade base

Safety locking aluminum structure

Ultra-resistant fluorocarbon powder coating



Durable & Antifouling Blade DAF

Aluminum extruded four-rib structure

Durable aluminum alloy rod

Diversion and noise reduction winglet



Safety Anti-fall & Convenient and Labor-saving

Ultra-lightweight military-spec locking module

Double-layer strengthened extension rod

Convenient and labor-saving steel cable fall prevention set



Bright Lighting Set BL

Body integrated patio light set

Scene changing dimmable light set



Double-layer strengthened extension rod

Durable & Antifouling Blade DAF

Safety locking aluminum structure

Ultra-resistant fluorocarbon powder coating

Body integrated patio light set

# HVLS



Suitable for height above 6M

SGS 30 million times fatigue test certification

The lightest and most energy-efficient industrial ceiling fan in the world

The best Taiwan bearing selection

US invention patent lighting structure

Model	AH-715	AH-615	AH-515	AH-415
Diameter(M)	7.15	6.15	5.15	4.15
Diameter(FT)	24'	20'	16'	14'
Min/Max Speed (RPM)	25 / 50	25 / 60	25 / 80	25 / 95
Current(A)	2.8A	3.4A	3.4A	1.8A
Voltage (V)	200~240	200~240	200~240	200~240
Power(W)	616	748	748	396
Noise(dB)	<40	<40	<40	<40
Blade	5	5	5	5
Weight(Kg)	78.5	68.7	62.2	52.6

## Helicopter Fans / AH series





Suitable for height under 6M

Blade with fluid dynamics design

Military-grade impact resistance testing

Bright and comfortable lighting combination



## Environment Fans / AE series

Model	AE-400	AE-360	AE-300	AE-250
Diameter(M)	4.0	3.6	3	2.5
Diameter(FT)	14'	12'	10'	8'
Min/Max Speed (RPM)	25/100	25/100	25/110	25/120
Current(A)	2.1	1.6	1.3	1.0
Voltage (V)	200~240	200~240	200~240	200~240
Power(W)	462	418	286	220
Noise(dB)	<40	<40	<40	<40
Blade	6	6	6	6
Weight(Kg)	32.6	29.8	26.9	24.5



Suitable for high-altitude  
roof reverse exhaust

Reversal Expert

High altitude heat removal

Low energy consumption



Model	AER-300
Diameter(M)	3
Diameter(FT)	10'
Min/Max Speed (RPM)	100RPM
Current(A)	1A
Voltage (V)	220V
Power(W)	220W
Noise(dB)	<65
Blade	6
Weight(Kg)	27

Heat Expelling Fan / R series

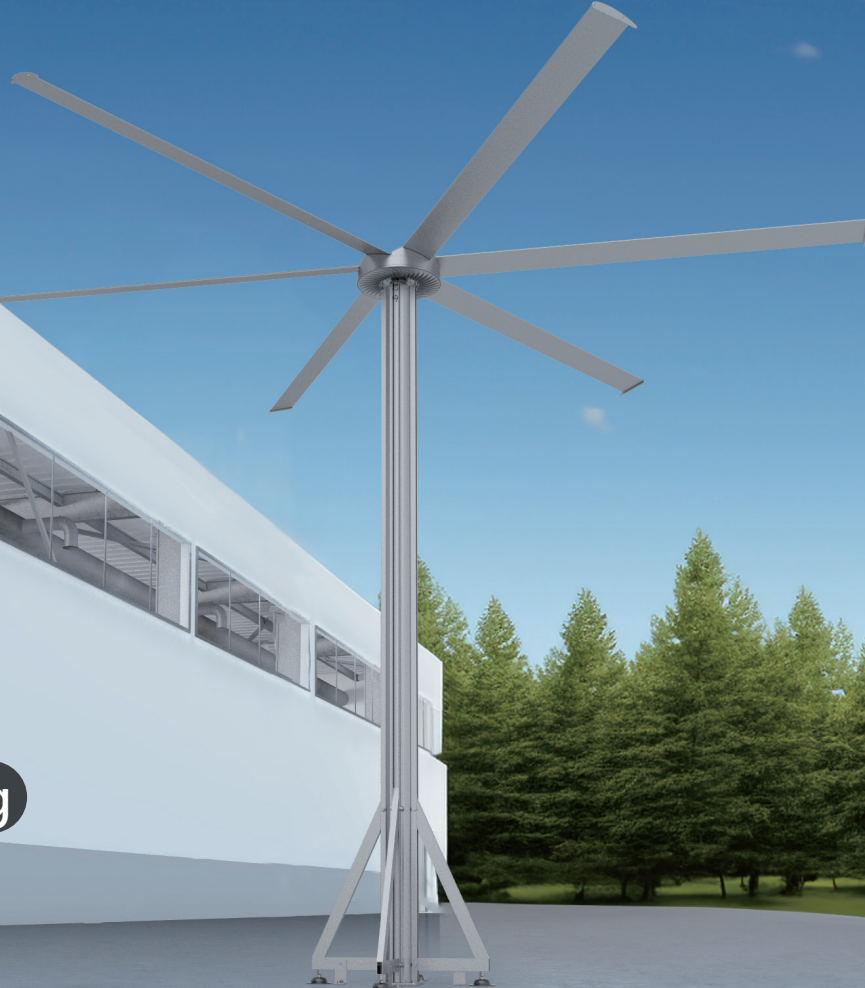


Suitable for upright and forward rotation in all fields

Outdoor Area

Elegant design

Waterproof and antifouling



Model	AHS-415	AES-400
Diameter(M)	4.0	4.0
Diameter(FT)	14'	13'
Min/Max Speed (RPM)	25/70	25/70
Current(A)	1.3	1.1
Voltage (V)	220	220
Power(W)	286	242
Noise(dB)	<40	<40
Blade	5	6
Weight(Kg)	88.5	67

Standing Pole Fan / S series



Suitable for wall-mounted  
circulation wind field

Blades for strong wind

Ultra-long air supply

Three-joint mounting



Model	AETW-200	AETW-130
Diameter(M)	2	1.3
Diameter(FT)	6.5'	5.5'
Min/Max Speed (RPM)	270RPM	450RPM
Current(A)	2.6A	2.6A
Voltage (V)	220V	220V
Power(W)	572W	572W
Noise(dB)	<65	<65
Blade	6	6
Weight(Kg)	70	37

Wall Mounted Tank Fan / TW series



Suitable for long and narrow wide area air supply

Ultra-long air supply

Waterproof and antifouling

Triangular stable positioning



Model	AETM-200	AETM-130
Diameter(M)	2	1.3
Diameter(FT)	6.5'	5.5'
Min/Max Speed (RPM)	270RPM	450RPM
Current(A)	2.6A	2.6A
Voltage (V)	220V	220V
Power(W)	572W	572W
Noise(dB)	<65	<65
Blade	6	6
Weight(Kg)	70	37

## Mobile Tank Fan / TM series





Suitable for wall and roof heat extraction

Carbon Reduction Master

Intelligent Temperature & Speed Control

Exhaust Elimination



Model	AEX-54
	450RPM
Min/Max Speed (RPM)	2.1A
Current(A)	220V
Voltage (V)	462W
Power(W)	<65
Noise(dB)	6
Blade	FRP
Weight(Kg)	58

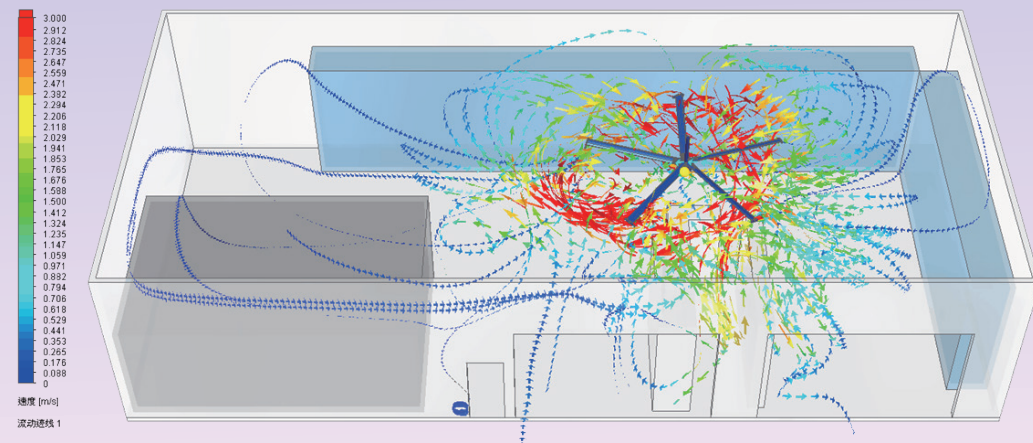
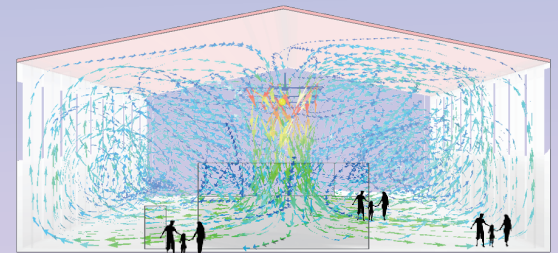
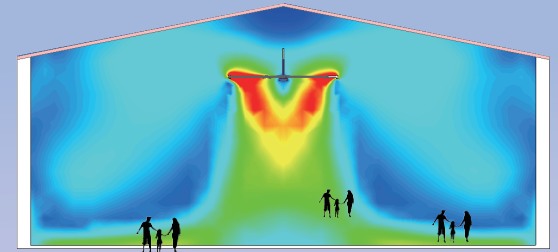
Exhaust Fan / X series



# Planning and Design of Wind Field Circulation

## Simcenter FloEFD&HVAC

- ◆ Wind field analysis
- ◆ Temperature, humidity and heat dissipation analysis
- ◆ Human comfort analysis
  - Comfort PPD、PMV coefficient
  - Comfort Draft Temperature、APDI coefficient
- ◆ Exhaust ventilation analysis
  - Pollutant removal CRE coefficient
  - Ventilation efficiency LAQI



Simcenter  
FLOEFD

SIEMENS





For **ESG**

LOVING THE EARTH BEGINS WITH  
THE MOST COMFORTABLE AIR  
THE WORLD'S MOST ENERGY-EFFICIENT COOLING SOLUTION

[www.amatg.com.tw](http://www.amatg.com.tw)



**AMA TECH CORP.**

Tel +886-2-2268-0565 Fax +886-2-2268-0602

1F, No.101, Zhongcheng Rd, Tucheng Dist, New Taipei City 236658, Taiwan